



MODERN CLASSIC MATERIAL CARE GUIDE



BELGIAN WEAVE *100% Polyester*

Care & Cleaning:

- To keep your product looking its best, opt for a water-based cleaner like Folex Instant Carpet Spot Remover or create a mixture of warm water and dish soap. Use this solution to tackle light stains. Gently spot clean by moving in a circular motion with a soft microfiber cloth. Rinse thoroughly by patting the stain with clean water. You can repeat this process as many times as necessary.
- If you encounter more stubborn stains, it's essential to act promptly. Follow the previously mentioned steps and consider using a dry cleaning solvent if a water-based cleaner doesn't do the job effectively.

Maintenance:

- To prevent the accumulation of dust, dirt, lint, hair, and crumbs, make it a routine to vacuum your product thoroughly every two weeks. Use a small upholstery attachment for best results.



BOUCLE WOOL *89.1% Polyester, 10.9% Wool*

Care & Cleaning:

- Swiftly blot away any spills or stains with an absorbent cloth. Apply a small amount of dry cleaning solvent (or Woolite) to the affected area using a clean, damp cloth, using a gentle dabbing motion.
- Begin spot cleaning from the outer edge of the stain and move inward. Rinse gently with a separate, clean, damp cloth and repeat the process as necessary.

Maintenance:

- Wool fabrics often contain extra fibers that may rise to the surface when the fabric is new. This is a natural occurrence and doesn't indicate any issues with the fabric's quality.
- To prevent the buildup of dust, dirt, lint, hair, crumbs, and excess fibers, it's recommended to vacuum the entire surface once a week. Use a small upholstery attachment for the best results.



CASHMERE *80% Wool, 20% Nylon*

Care & Cleaning:

- Act swiftly to blot up any spills or stains using an absorbent cloth. Apply a small quantity of dry cleaning solvent (or Woolite) to the stained area using gentle strokes with a clean, damp cloth.
- Start cleaning from the outer edge of the stain and gradually work your way inward. Rinse delicately with a separate, clean, damp cloth, and repeat the process as necessary.

Maintenance:

- Wool fabrics may have extra fibers that rise to the surface when new, but this is normal and doesn't affect the fabric's quality over time.
- Use a fine-bristled cashmere or wool brush to gently remove excess fibers in one direction with short strokes.
- To eliminate dust, dirt, lint, hair, crumbs, and fibers, vacuum the fabric using an upholstery attachment.



MODERN CLASSIC MATERIAL CARE GUIDE



CHENILLE HELIOS *100% Polyester*

Care & Cleaning:

- For light stains, you can effectively clean with a water-based cleaner like Folex Instant Carpet Spot Remover or by mixing warm water with dish soap. Carefully spot clean using a soft microfiber cloth in a circular motion. Rinse thoroughly by patting the stain with clean water, and repeat as necessary.
- If you come across stubborn stains, it's important to act promptly. Follow the previously mentioned steps, and if a water-based cleaner doesn't suffice, consider using a dry cleaning solvent.

Maintenance:

- To prevent the accumulation of dust, dirt, lint, hair, and crumbs, make it a habit to vacuum your entire item every two weeks. Utilize a small upholstery attachment for best results.



CLASSIC BOUCLE *95% Polyester, 5% Viscose*

Care & Cleaning:

- Act promptly to blot up any spills or stains with an absorbent cloth. You can clean light stains by using a water-based cleaner like Folex Instant Carpet Spot Remover or by making a mixture of warm water and dish soap. Clean with short, repetitive strokes using a soft microfiber cloth. Rinse thoroughly by patting the stain with clean water and repeat the process as necessary.
- When dealing with more stubborn stains, it's essential to address them as soon as possible. Follow the aforementioned steps, and if a water-based cleaner doesn't do the trick, consider using a dry cleaning solvent.

Maintenance:

- To maintain bouclé fabric, which is known for its intricate loops, regular vacuuming is crucial. Vacuum the entire surface once a week using a small upholstery attachment to prevent the accumulation of dust, dirt, lint, hair, and crumbs.



CLASSIC SUEDE *80% Polyester Fiber, 20% Polyurethane*

Care & Cleaning:

- To address light stains, you can effectively use a water-based cleaner like Folex Instant Carpet Spot Remover or create a mixture of warm water and dish soap. Carefully spot clean by moving in a circular motion with a soft microfiber cloth. Rinse thoroughly by patting the stain with clean water, and repeat as necessary.
- When dealing with more stubborn stains, it's important to act promptly. Follow the previously mentioned steps, and if a water-based cleaner isn't effective enough, consider trying a dry cleaning solvent.

Maintenance:

- To prevent the accumulation of dust, dirt, lint, hair, and crumbs, make sure to vacuum the entire surface every two weeks using a small upholstery attachment.



MODERN CLASSIC MATERIAL CARE GUIDE



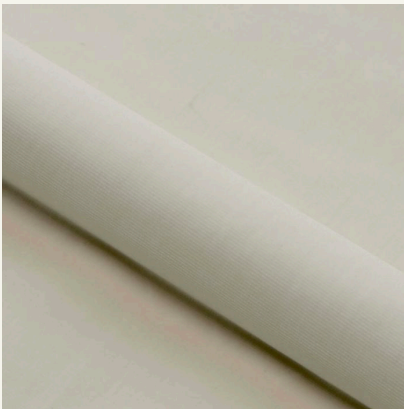
COTTON VELVET *89.1% Cotton, 10.9% Polyester*

Care & Cleaning:

- Act promptly to blot any spills or stains with a clean, dry cloth. Use a gentle fabric solvent cleaner for spot cleaning. Thoroughly blot with a soft microfiber cloth to eliminate any leftover residue. Repeat as necessary.
- While the fabric is still slightly damp, employ a velvet boiffin brush with soft bristles to carefully brush the fabric in the direction of the velvet pile.
- If you encounter stubborn stains, it's advisable to seek professional cleaning services.

Maintenance:

- To prevent the accumulation of dust, dirt, lint, hair, and crumbs, it's important to vacuum regularly on a low setting using a small upholstery attachment. After vacuuming, use a velvet boiffin brush with soft bristles to gently brush in the direction of the velvet pile for added maintenance.



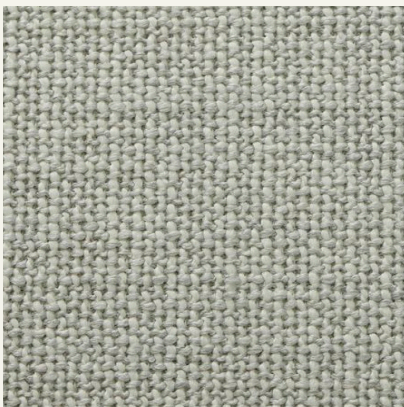
LUSTROUS VELVET *100% Polyester*

Care & Cleaning:

- Swiftly address light stains by utilizing a water-based cleaner like Folex Instant Carpet Spot Remover or a blend of warm water and dish soap. Gently spot clean in a circular motion using a soft microfiber cloth. Rinse thoroughly by patting the stain with clean water, and repeat as required.
- When dealing with more stubborn stains, it's essential to act promptly. Follow the previously mentioned steps, and if a water-based cleaner proves ineffective, consider experimenting with a dry cleaning solvent.

Maintenance:

- To prevent the accumulation of dust, dirt, lint, hair, and crumbs, it's important to vacuum regularly on a low setting using a small upholstery attachment. After vacuuming, gently brush the fabric in the direction of the velvet pile using a velvet boiffin brush with soft bristles.



PEBBLE WEAVE *82% Polyester, 16% Acrylic, 2% Wool*

Care & Cleaning:

- Quickly address light stains by employing a water-based cleaner like Folex Instant Carpet Spot Remover or a mixture of warm water and dish soap. Carefully spot clean by moving in a circular motion with a soft microfiber cloth. Rinse thoroughly by patting the stain with clean water, and repeat as necessary.
- If you encounter more stubborn stains, it's essential to act promptly. Follow the previously mentioned steps, and if a water-based cleaner doesn't suffice, consider attempting a dry cleaning solvent.

Maintenance:

- To prevent the accumulation of dust, dirt, lint, hair, and crumbs, make sure to vacuum the entire surface every two weeks using a small upholstery attachment.



MODERN CLASSIC MATERIAL CARE GUIDE



PERFORMANCE FELT *100% Polyester*

Care & Cleaning:

- Carefully blot (avoid rubbing) all spills and stains with an absorbent cloth. If the stain persists, first remove any excess soil or debris from the surface and then flush the area with warm water. Blot with an absorbent cloth and repeat the process until the stain is completely removed. Be cautious not to rub the stain to prevent it from spreading.
- For tougher stains, it's important to act promptly. Mix 2-3 drops of dish soap with a cup of water and apply it to the stained area. Gently work the solution into the area, wait for a minute, and then blot the stain with an absorbent cloth. Repeat this process as many times as needed and finish by thoroughly rinsing with warm water to remove any soap residue.

Maintenance:

- To prevent the accumulation of dust, dirt, lint, hair, and crumbs, it's advisable to vacuum the entire surface every two weeks using a small upholstery attachment.



SHEEPSKIN *100% Polyester*

Care & Cleaning:

- Promptly blot up any spills or stains with an absorbent cloth. You can clean light stains effectively by using a water-based cleaner like Folex Instant Carpet Spot Remover or by creating a mixture of warm water and dish soap. Gently spot clean using a soft microfiber cloth, moving in a circular motion. Rinse thoroughly by patting the stain with clean water and repeat as necessary.
- If you encounter more stubborn stains, it's important to act quickly. Follow the previously mentioned steps, and if a water-based cleaner doesn't do the job, consider trying a dry cleaning solvent.

Maintenance:

- To prevent the buildup of dust, dirt, lint, hair, and crumbs, it's recommended to vacuum the entire surface weekly using a small upholstery attachment.
- Use a wired upholstery brush to gently comb the fabric all over. This helps remove trapped particles, untangle matted fibers, and restore and fluff up its natural pile.



STRIE VELVET *100% Polyester*

Care & Cleaning:

- Swiftly address light stains by using a water-based cleaner like Folex Instant Carpet Spot Remover or by preparing a mixture of warm water and dish soap. Gently spot clean in a circular motion using a soft microfiber cloth. Rinse thoroughly by patting the stain with clean water and repeat as necessary.
- When dealing with more stubborn stains, it's crucial to act promptly. Follow the previously mentioned steps, and if a water-based cleaner doesn't provide the desired results, consider attempting a dry cleaning solvent.

Maintenance:

- To prevent the accumulation of dust, dirt, lint, hair, and crumbs, make sure to vacuum regularly on a low setting using a small upholstery attachment. After vacuuming, use a velvet boiffin brush with soft bristles to gently brush in the direction of the velvet pile for added maintenance.



MODERN CLASSIC MATERIAL CARE GUIDE



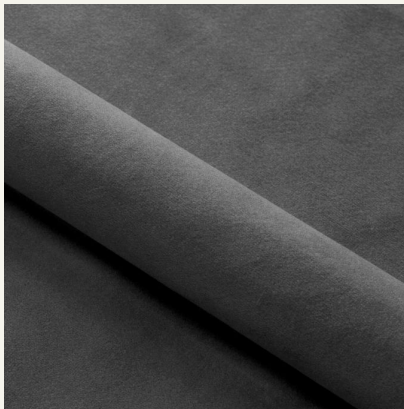
TEXTURED LINEN WEAVE *39% Linen, 32% Polyester, 19% Acrylic, 10% Cotton*

Care & Cleaning:

- Swiftly address light stains by employing a water-based cleaner like Folex Instant Carpet Spot Remover or by creating a mixture of warm water and dish soap. Carefully spot clean in a circular motion using a soft microfiber cloth. Rinse thoroughly by patting the stain with clean water, and repeat as necessary.
- If you encounter more stubborn stains, it's crucial to act promptly. Follow the previously mentioned steps, and if a water-based cleaner doesn't yield satisfactory results, consider attempting a dry cleaning solvent.

Maintenance:

- To prevent the accumulation of dust, dirt, lint, hair, and crumbs, it's advisable to vacuum the entire surface every two weeks using a small upholstery attachment.



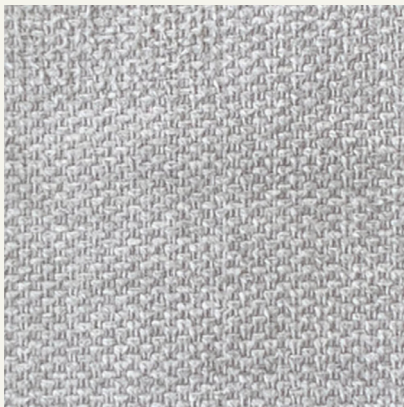
VELVET *100% Polyester*

Care & Cleaning:

- Swiftly address light stains by utilizing a water-based cleaner like Folex Instant Carpet Spot Remover or by creating a mixture of warm water and dish soap. Gently spot clean in a circular motion with a soft microfiber cloth. Rinse thoroughly by patting the stain with clean water and repeat as necessary.
- If you encounter more stubborn stains, it's crucial to act promptly. Follow the previously mentioned steps, and if a water-based cleaner doesn't prove effective, consider attempting a dry cleaning solvent.

Maintenance:

- To prevent the buildup of dust, dirt, lint, hair, and crumbs, it's recommended to vacuum regularly on a low setting using a small upholstery attachment. After vacuuming, use a velvet boiffin brush with soft bristles to gently brush in the direction of the velvet pile for added maintenance.



WOVEN MERIT *100% Polyester*

Care & Cleaning:

- Swiftly address light stains by utilizing a water-based cleaner like Folex Instant Carpet Spot Remover or by mixing warm water with dish soap. Carefully spot clean in a circular motion using a soft microfiber cloth. Rinse thoroughly by patting the stain with clean water and repeat as necessary.
- When dealing with more stubborn stains, it's essential to act promptly. Follow the previously mentioned steps, and if a water-based cleaner doesn't prove effective, consider attempting a dry cleaning solvent.

Maintenance:

- To prevent the accumulation of dust, dirt, lint, hair, and crumbs, it's advisable to vacuum the entire surface every two weeks using a small upholstery attachment.



MODERN CLASSIC MATERIAL CARE GUIDE



WOVEN PALO *100% Polyester*

Care & Cleaning:

- Swiftly address light stains by employing a water-based cleaner like Folex Instant Carpet Spot Remover or by preparing a mixture of warm water and dish soap. Gently spot clean in a circular motion using a soft microfiber cloth. Rinse thoroughly by patting the stain with clean water, and repeat as necessary.
- When dealing with more stubborn stains, it's crucial to act promptly. Follow the previously mentioned steps, and if a water-based cleaner doesn't yield satisfactory results, consider attempting a dry cleaning solvent.

Maintenance:

- To prevent the buildup of dust, dirt, lint, hair, and crumbs, it's recommended to vacuum the entire surface every two weeks using a small upholstery attachment.



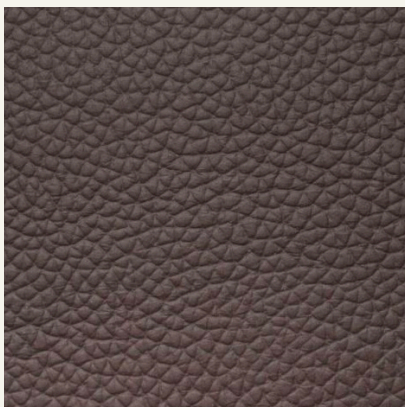
ANILINE LEATHER *100% European Cowhide*

Care & Cleaning:

- To remove stains, use mild dish soap with a soft, damp cloth. Gently rub in small circles to clean the stained area. Remove any excess water with a clean towel and allow it to air dry.
- Maintain the leather's natural oils by using a water-based leather conditioner. Apply the conditioner evenly to a clean, soft cloth and gently rub it in small circles to condition the leather. This helps protect against fading, cracking, and scratches. Wipe dry with a clean cloth and allow it to air dry. Avoid applying any harsh chemicals to leather furniture.

Maintenance:

- To prevent the buildup of dust, dirt, hair, and crumbs, it's recommended to vacuum the entire surface every two weeks using a small upholstery attachment.
- Keep your leather furniture indoors and minimize exposure to direct sunlight whenever possible to help maintain its quality and appearance.



TOP GRAIN LEATHER *100% European Cowhide*

Care & Cleaning:

- To remove stains, take a soft, damp cloth and use mild dish soap. Gently rub in small circles to clean the stained area. Afterward, remove any excess water with a clean towel and allow it to air dry.
- Keep your leather furniture well-moisturized by using a water-based leather conditioner. Apply the conditioner evenly to a clean, soft cloth and gently rub it in small circles to condition the leather. Helps protect against scratches. Wipe dry with a clean cloth and let it air dry. Always avoid applying any harsh chemicals to your leather.

Maintenance:

- To prevent the accumulation of dust, dirt, hair, and crumbs, it's advisable to vacuum the entire surface every two weeks using a small upholstery attachment.
- Maintain your leather furniture's condition by keeping it indoors and minimizing its exposure to direct sunlight whenever possible. This helps preserve the quality and appearance of the leather.



MODERN CLASSIC MATERIAL CARE GUIDE



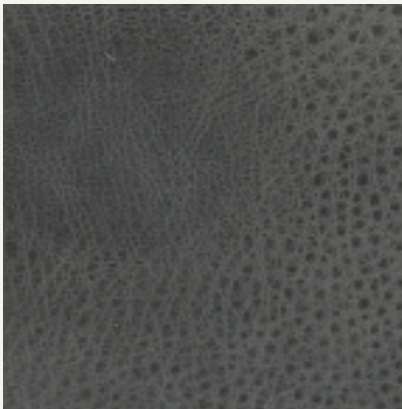
VEGAN LEATHER *70% Polyvinyl, 30% Polyurethane*

Care & Cleaning:

- Swiftly address light stains by employing a water-based cleaner or a mixture of warm water and dish soap. Gently spot clean in a circular motion using a soft, clean cloth. Rinse thoroughly by patting the stain with clean water, repeating the process as necessary, and allow it to air dry.
- When dealing with more stubborn stains, it's essential to act promptly. Follow the previously mentioned steps, and if a water-based cleaner doesn't prove effective, consider attempting a dry cleaning solvent.

Maintenance:

- To prevent the accumulation of dust, dirt, hair, and crumbs, it's recommended to vacuum the entire surface every two weeks using a small upholstery attachment.



VINTAGE LEATHER *100% European Cowhide*

Care & Cleaning:

- To remove stains, take a soft, damp cloth and use mild dish soap. Gently rub in small circles to clean the stained area. Afterward, remove any excess water with a clean towel and allow it to air dry.
- Keep your leather furniture well-moisturized by using a water-based leather conditioner. Apply the conditioner evenly to a clean, soft cloth and gently rub it in small circles to condition the leather. This helps protect against fading, cracking, and scratches. Wipe dry with a clean cloth and let it air dry. Always avoid applying any harsh chemicals to your leather furniture.

Maintenance:

- To prevent the accumulation of dust, dirt, hair, and crumbs, it's advisable to vacuum the entire surface every two weeks using a small upholstery attachment.
- Maintain your leather furniture's condition by keeping it indoors and minimizing its exposure to direct sunlight whenever possible. This helps preserve the quality and appearance of the leather.